



FOUR SEASONS  
RESORT  
SHARM EL SHEIKH, EGYPT

REDISCOVER THE NEW  
FOUR SEASONS RESORT SHARM EL SHEIKH, EGYPT

---

A Luxurious Oasis Between the Desert and the Reef





AN ARABIAN FAIRYTALE



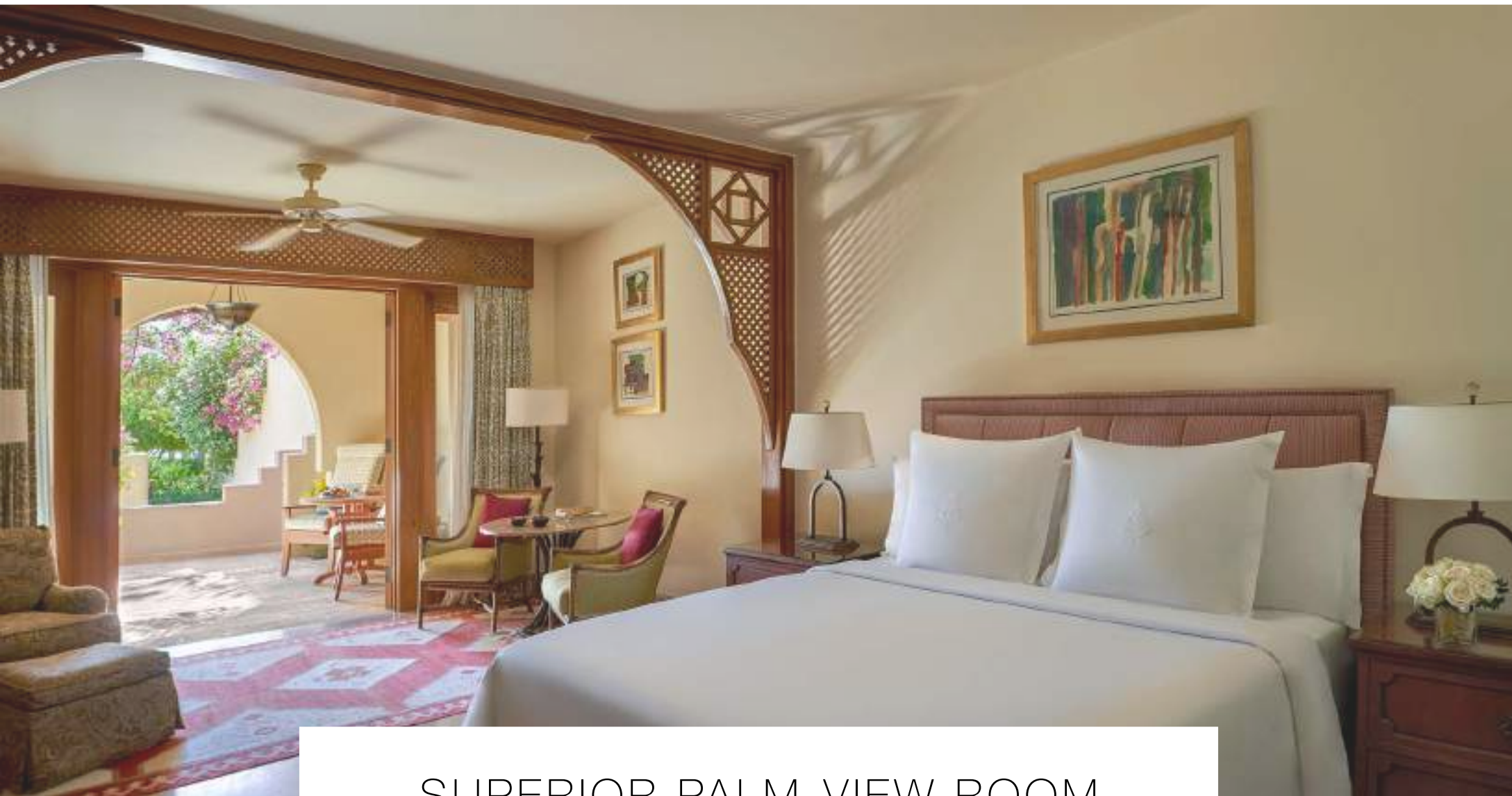




## SPACIOUS GUEST ROOMS

Blending sleek modern décor with traditional Arabian authenticity, 60 brand-new rooms - designed to echo surrounding nature - are perched in intimate two-storey buildings facing the crystal-clear Red Sea bringing the Resort's total to 169 spacious guest rooms. Starting from 75 sqm, all accommodations maximise comfort and privacy while offering the legendary Four Seasons bed, generous indoor and outdoor lounge areas, secluded terraces or balconies with scenic vistas, a full walk-in closet and an all-marble bathroom aglow with sunlight.





## SUPERIOR PALM-VIEW ROOM

With views of swaying palms in the garden courtyard, this warm traditional guest room gives you plenty of space to relax, choosing between indoor and outdoor lounge areas. Curl up in the cozy nook beside the bed or private terrace – perfect for daydreaming of desert and sea adventures.



# DETAILS

## BEDS

One king or two twin beds, One rollaway or crib upon request

## OCCUPANCY

3 adults, or 2 adults and 2 children ages 12 years and under

## SIZE

- 70 m2 (753 sq.ft.)
- Lower level

## BATHROOM

One full marble bathroom, including two vanity sinks, water closet, glass-walled shower and a bath tub

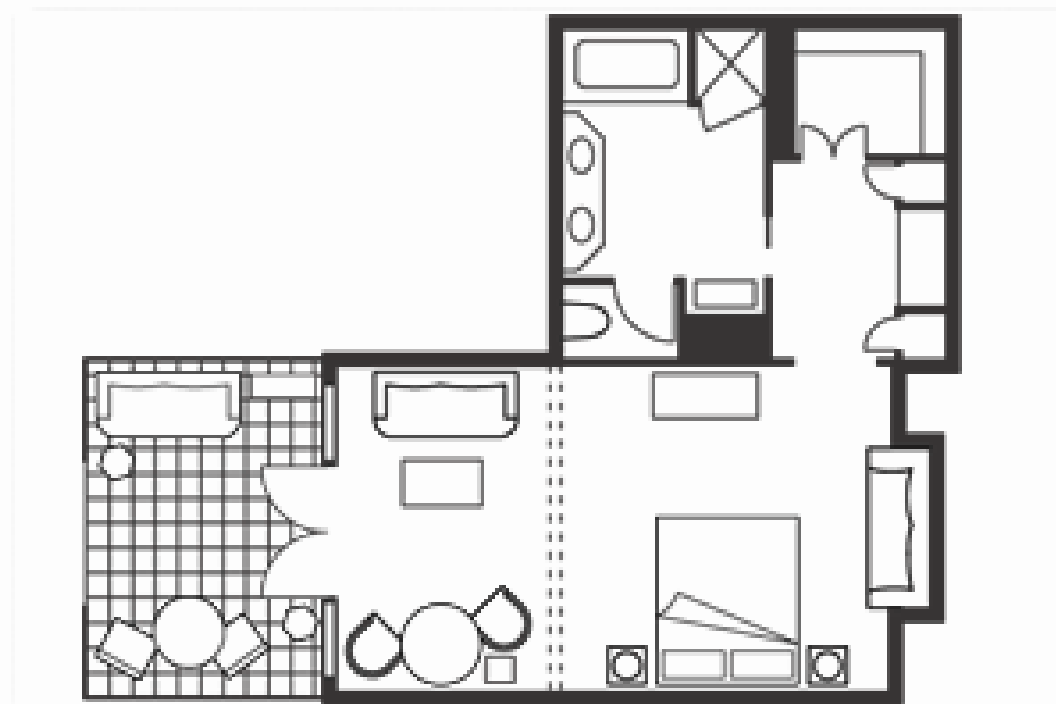
## VIEWS

View of the gardens

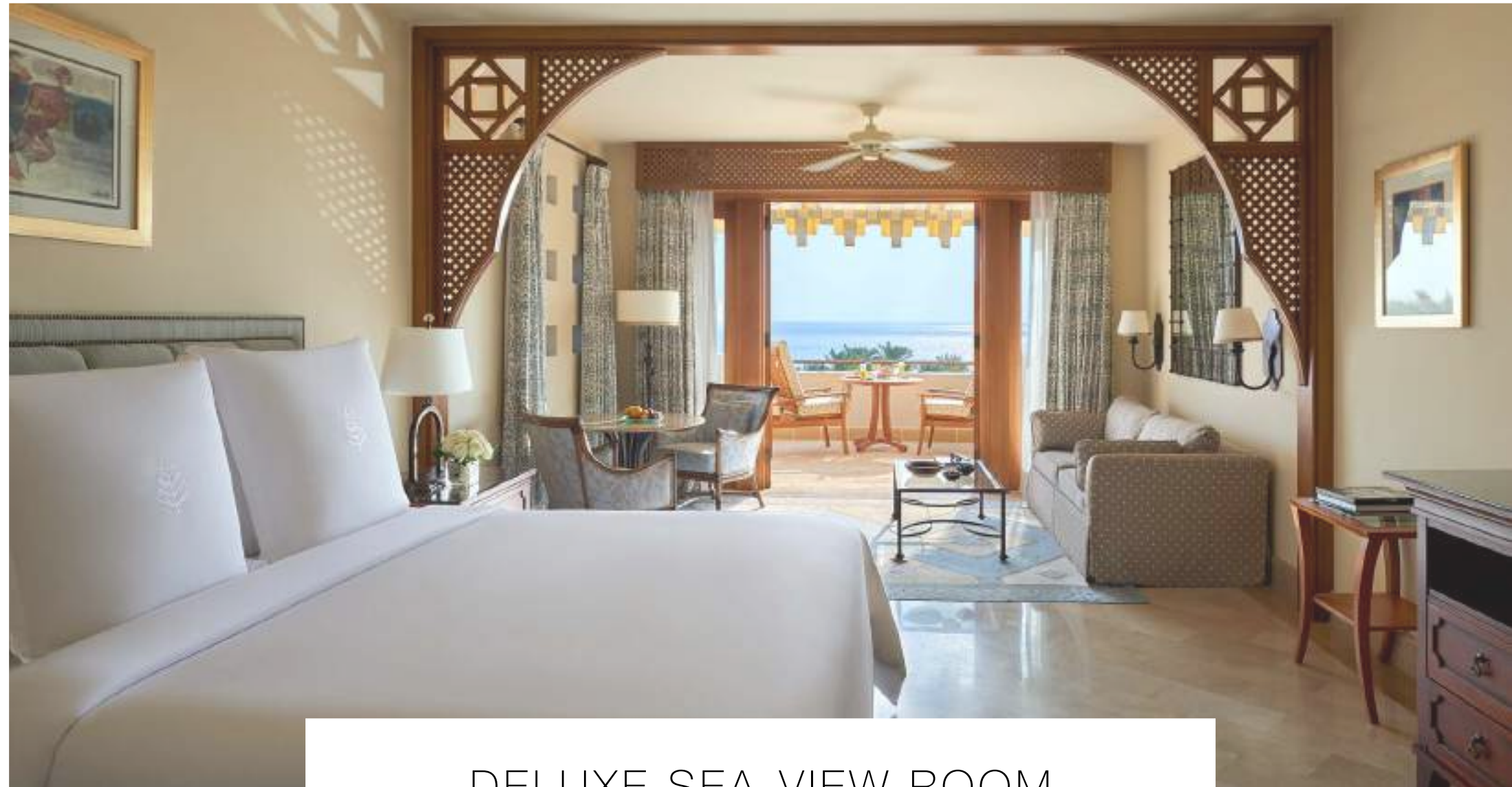
## UNIQUE FEATURES

- Indoor living area with sofa bed, two armchairs and small table
- Outdoor terrace with two chairs and built-in loveseat
- Extra storage with armoire and walk-in closet

## FLOOR PLAN







## DELUXE SEA-VIEW ROOM

With uninterrupted views of the sparkling Red Sea, this comfortably traditional guest room gives you plenty of space to relax, choosing between indoor and outdoor lounge areas. Curl up in the cozy nook beside the bed or in your private terrace or balcony – perfect for daydreaming of desert and sea adventures.



# DETAILS

## BEDS

One king bed or two twin beds, One sofa bed, plus one rollaway or crib on request

## OCCUPANCY

3 adults, or 2 adults and 2 children ages 12 and under

## SIZE

- 70 m2 (753 sq.ft.)
- Lower level and upper level

## BATHROOM

One full marble bathroom, including two vanity sinks, water closet, glass-walled shower and a bath tub

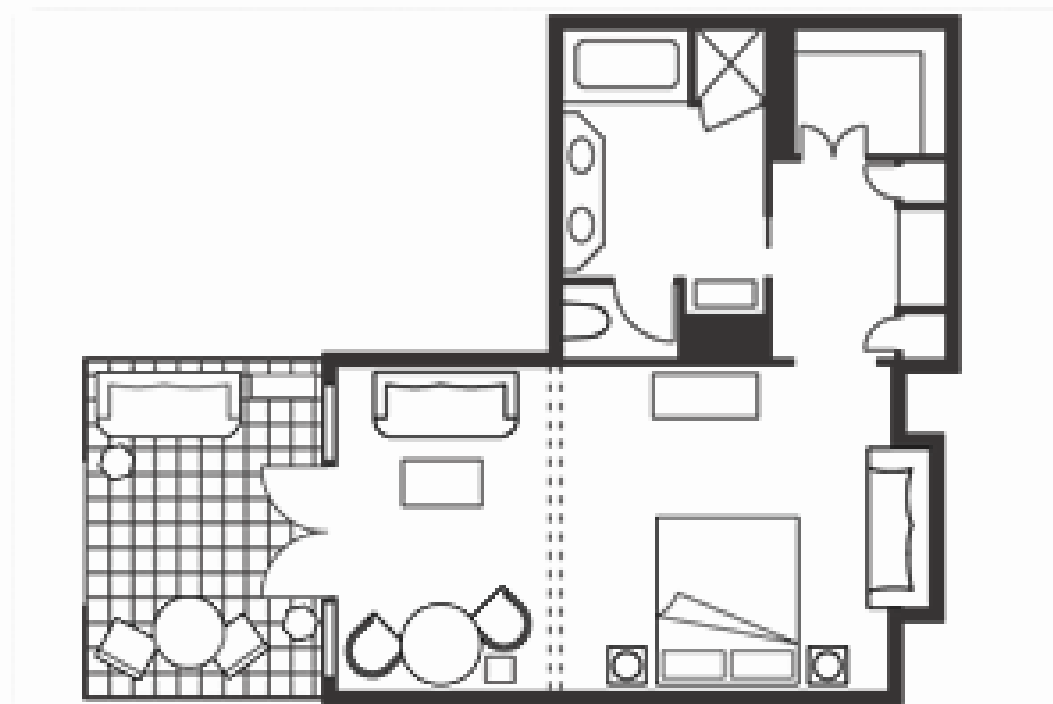
## VIEWS

Red Sea

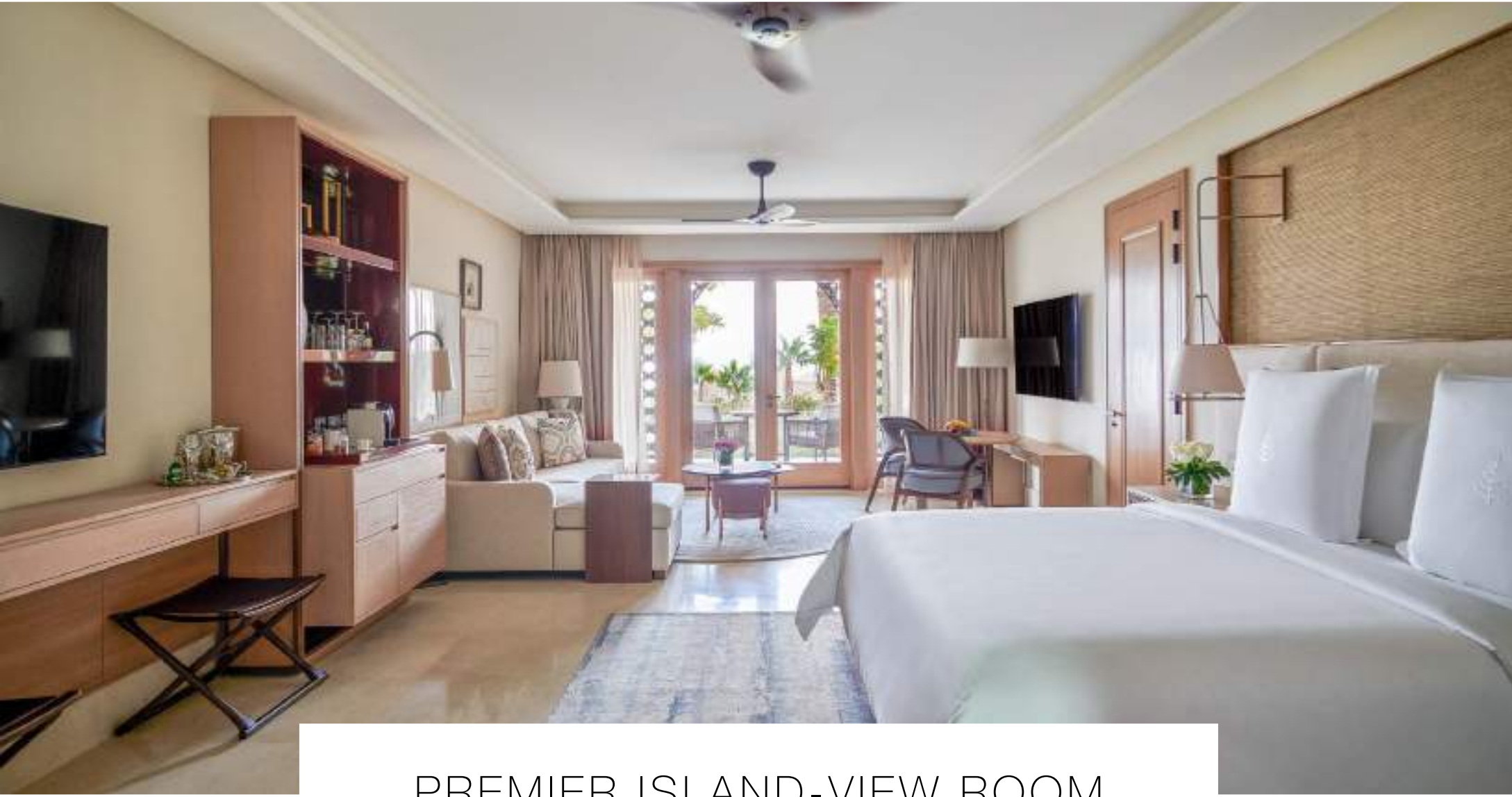
## UNIQUE FEATURES

- Indoor living area with sofa bed, two armchairs and small table
- Outdoor terrace with two chairs and built-in loveseat
- Extra storage with armoire and walk-in closet

## FLOOR PLAN







## PREMIER ISLAND-VIEW ROOM

Experience the latest Four Seasons luxury in this spacious guest room, furnished with sleek modern décor and state-of-the-art technology. Relax in the indoor living area or on the outdoor balcony or terrace, offering partial views of the Red Sea and Tiran Island. Your expansive bathroom is a spa-like sanctuary, aglow with sunlight.





# DETAILS

## BEDS

One king or two twin beds, One sofa bed, plus one rollaway or crib upon request

## OCCUPANCY

3 adults, or 2 adults and 2 children ages 12 years and under

## SIZE

- 75-79 m<sup>2</sup> (807-850 sq.ft.)
- Lower level and upper level

## BATHROOM

One sunlit marble bathroom, including two vanity sinks with in-mirror TV, water closet, glass-walled shower and window-side tub

## VIEWS

Partial Red Sea and Tiran Island view

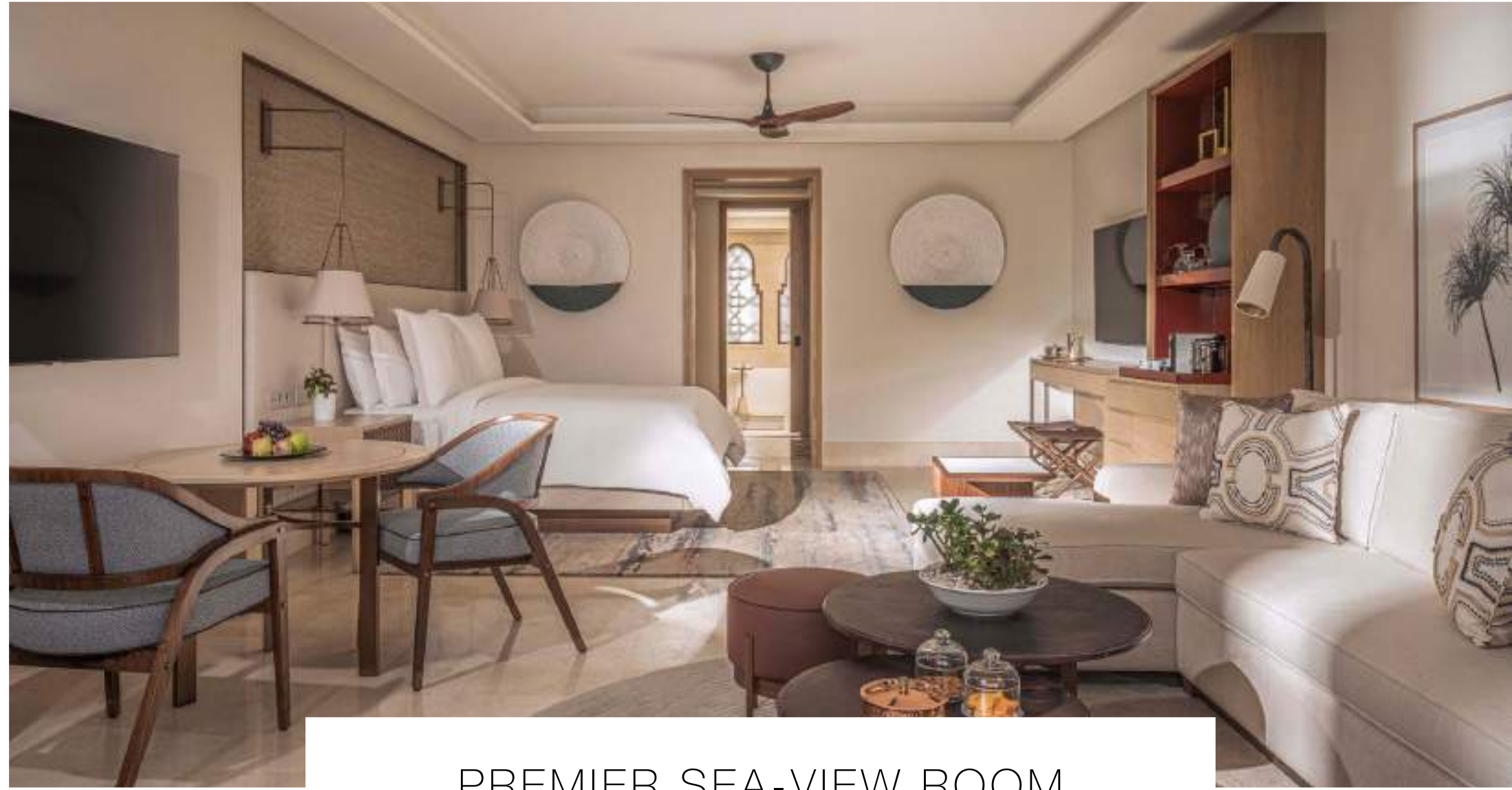
## UNIQUE FEATURES

- Indoor living area with sofa bed, two armchairs and small table
- Outdoor terrace with two chairs
- Extra storage with armoire and walk-in closet
- Two flat-screen televisions

## FLOOR PLAN







## PREMIER SEA-VIEW ROOM

Boasting our very best view of the Red Sea, this spacious guest room offers the latest Four Seasons luxury, including sleek modern décor and state-of-the-art technology. Relax in the indoor living area or outdoors on the balcony or terrace. Your bathroom is a spa-like sanctuary, aglow with sunlight.





# DETAILS

## BEDS

One king or two twin beds, One sofa bed, plus one rollaway or crib upon request

## OCCUPANCY

3 adults, or 2 adults and 2 children ages 12 years and under

## SIZE

- 75-79 m<sup>2</sup> (807-850 sq.ft.)
- Lower level and upper level

## BATHROOM

One sunlit marble bathroom, including two vanity sinks with in-mirror TV, water closet, glass-walled shower and window-side tub

## VIEWS

Panoramic Red Sea

## UNIQUE FEATURES

- Indoor living area with sofa bed, two armchairs and small table
- Outdoor terrace with two chairs
- Extra storage with armoire and walk-in closet
- Two flat-screen televisions

## FLOOR PLAN





## SUITE COLLECTION

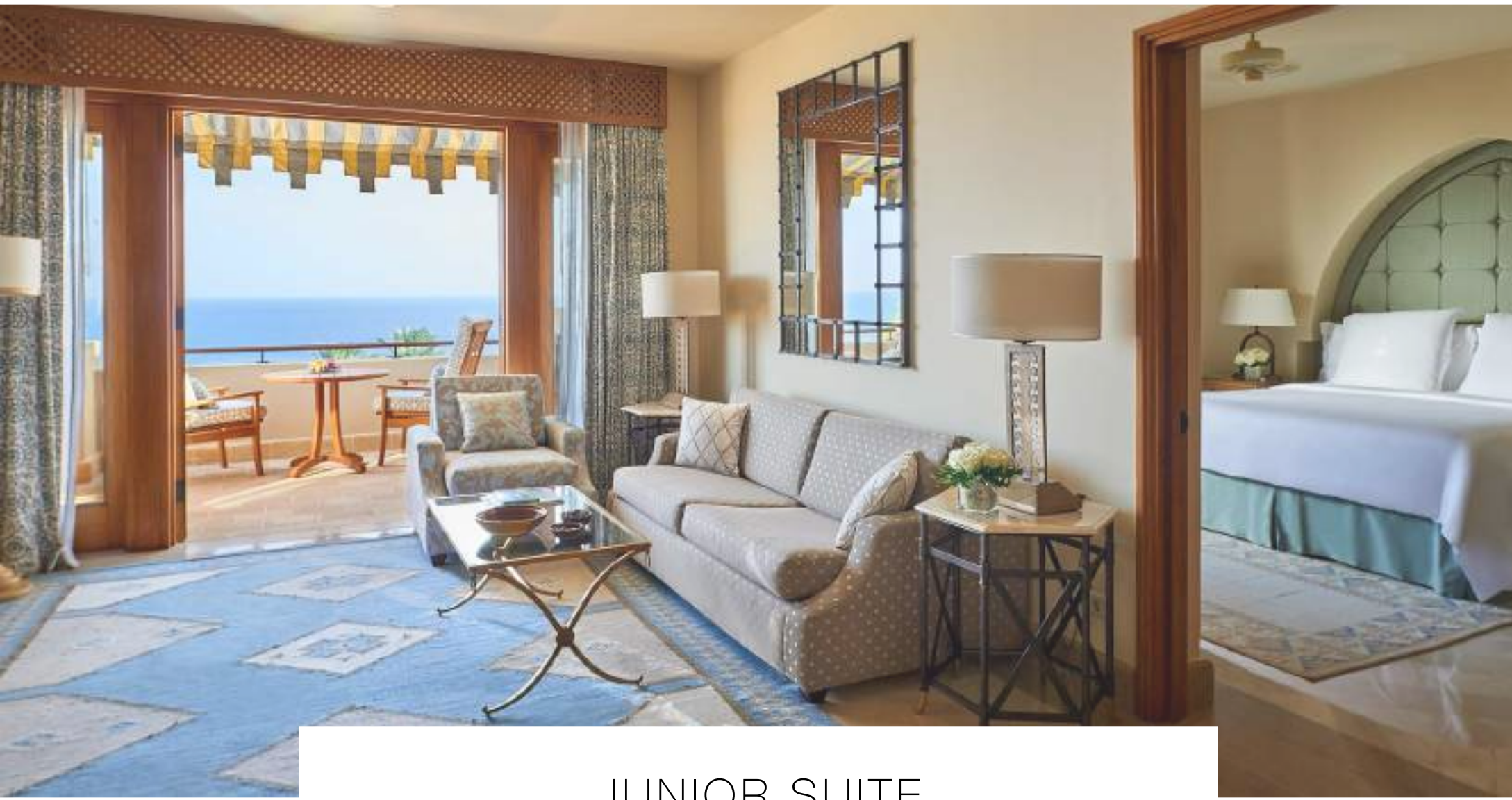
---

Ideal for families, group travelers and the most distinguished guests, the expansive collection of 52 luxury suites ranges from one and two bedrooms boasting their own private pools to stand alone beachfront residences with their own drive-ways, complete residential facilities, butler services and more.

Signature Suites include two Presidential Suites and a Royal Suite, with the jewel of the crown being The Palace. Magnificent and modern, this palace-like residence offers the ultimate in Four Seasons sophistication, and an all-marble bathroom aglow with sunlight.



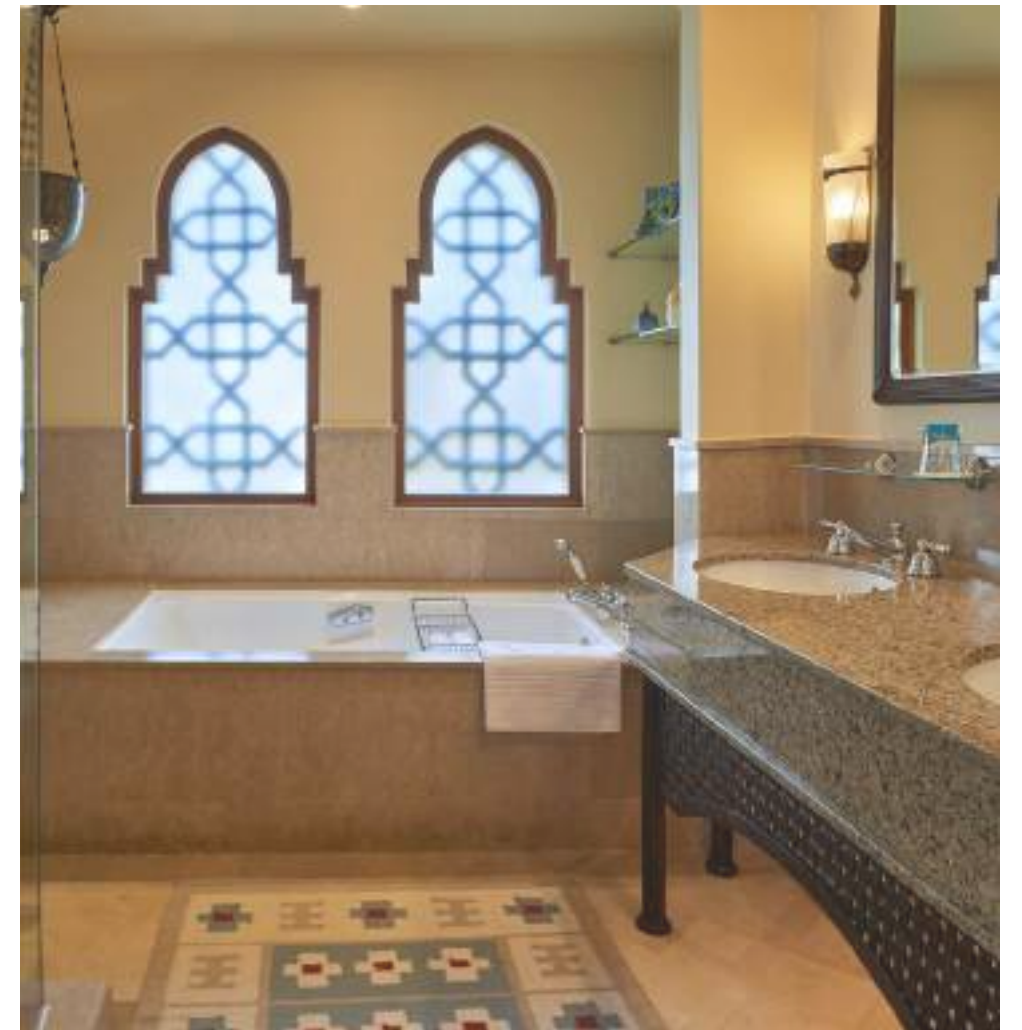




## JUNIOR SUITE

---

Enjoy upper-floor views of the Red Sea from two seating areas: one indoors and one on the balcony. With comfortable traditional style, this one-bedroom hideaway lets you sunbathe in privacy, dine al fresco, and enjoy the splendour of your all-marble Four Seasons bathroom.





# DETAILS

## BEDS

One king bed, One sofa bed, plus one rollaway or crib upon request

## OCCUPANCY

3 adults, or 2 adults and 2 children ages 12 and under

## SIZE

- 107 m<sup>2</sup> (1,152 sq.ft.)
- Upper level

## BATHROOM

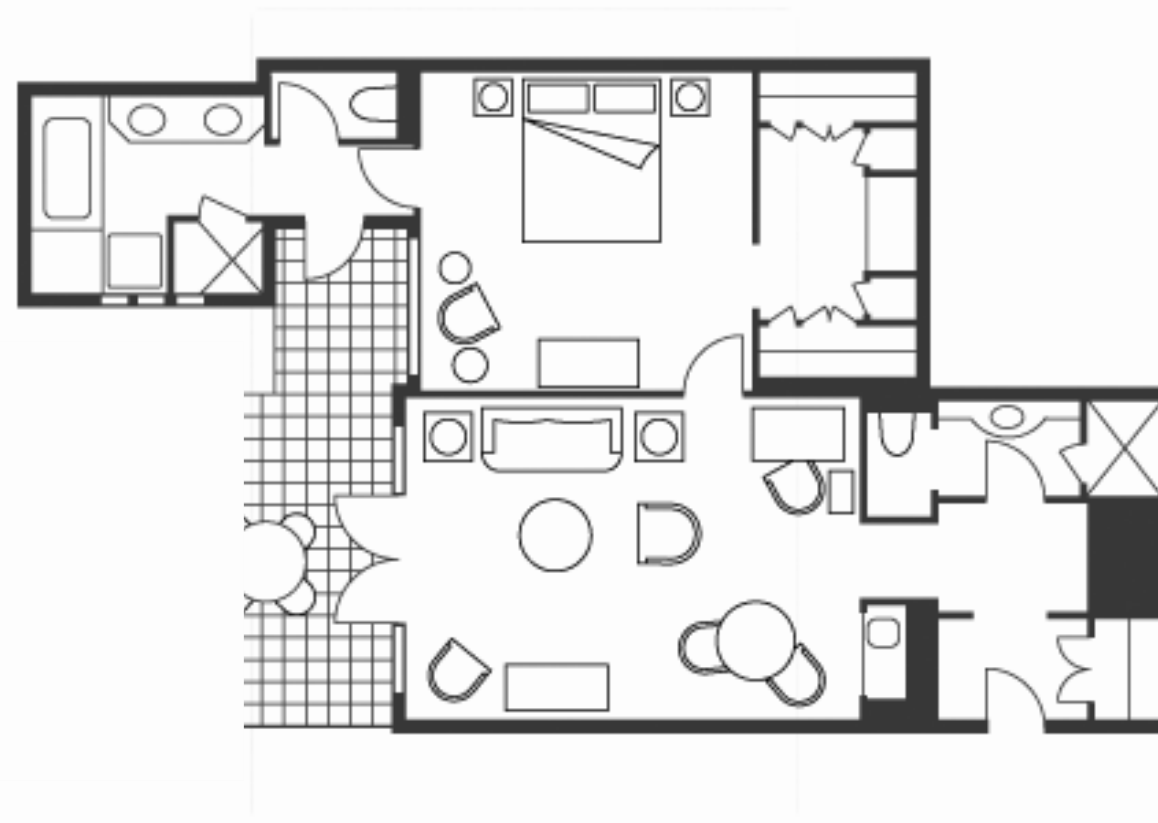
- One sunlit marble bathroom, including two vanity sinks, water closet, glass-walled shower and bath tub
- One guest powder room with shower

## VIEWS

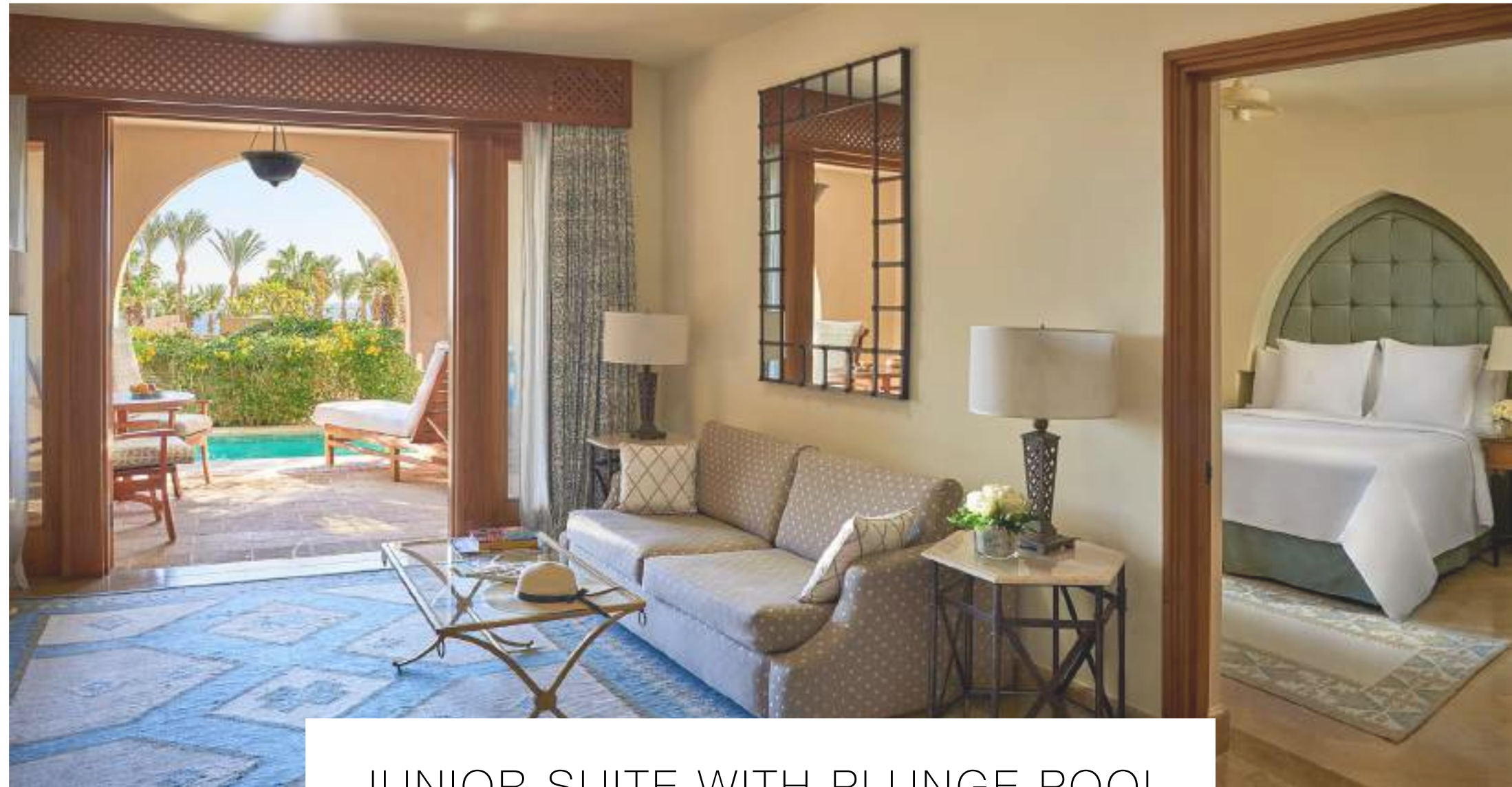
Red Sea

## UNIQUE FEATURES

- Desk in living area
- Outdoor dining table
- Extra-large walk-in closet







## JUNIOR SUITE WITH PLUNGE POOL

Soak in your private plunge pool as you gaze upon lush gardens. With traditional Arabian comfort, this romantic one-bedroom hideaway features additional seating areas: one indoors and one on the terrace poolside. Sunbathe in privacy, dine al fresco, and share the splendour of your Four Seasons bathroom.





# DETAILS

## BEDS

One king bed, One sofabed, plus one rollaway or crib upon request

## OCCUPANCY

3 adults, or 2 adults and 2 children ages 12 and under

## SIZE

- 115 m2 (1,238 sq.ft)
- Lower level

## BATHROOM

- One sunlit marble bathroom, including two vanity sinks, water closet, glass-walled shower and bath tub
- One guest powder room with shower

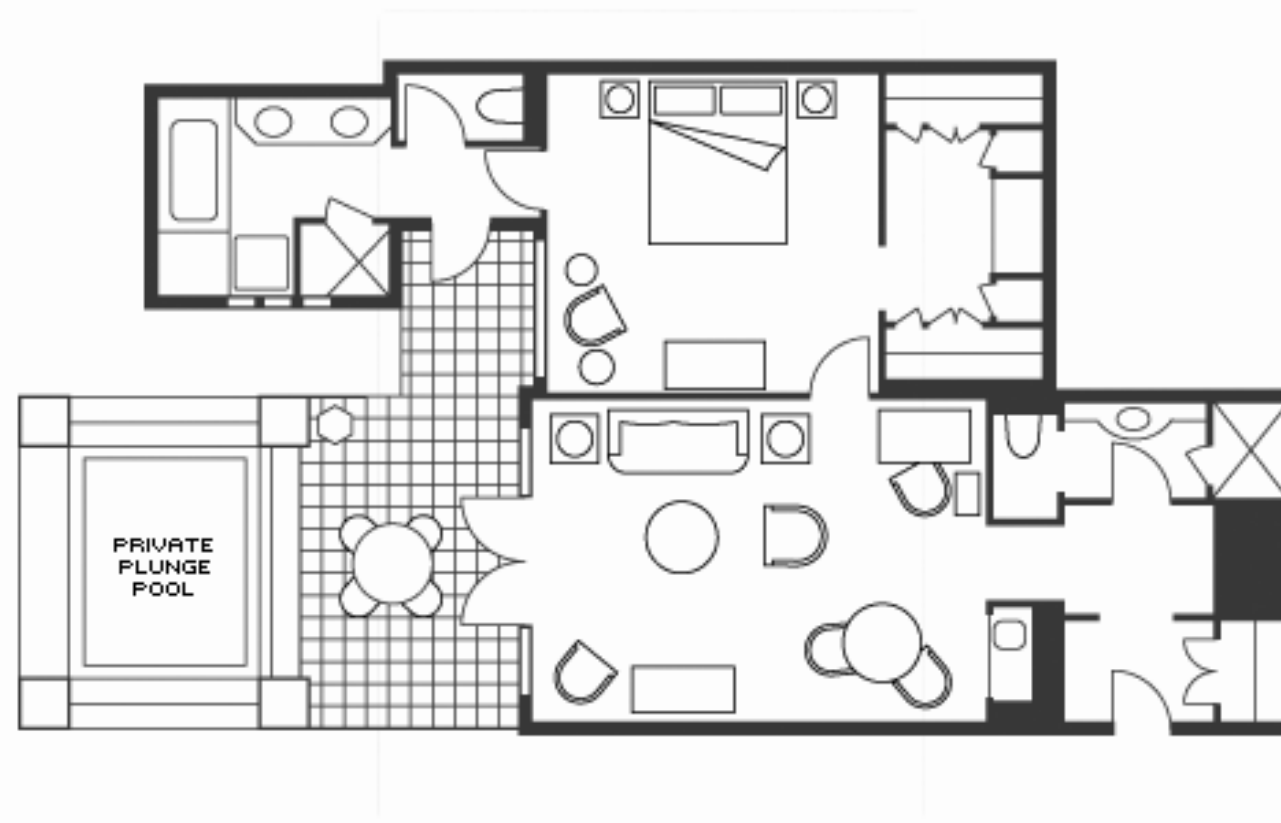
## VIEWS

Partial Red Sea and Garden Courtyards

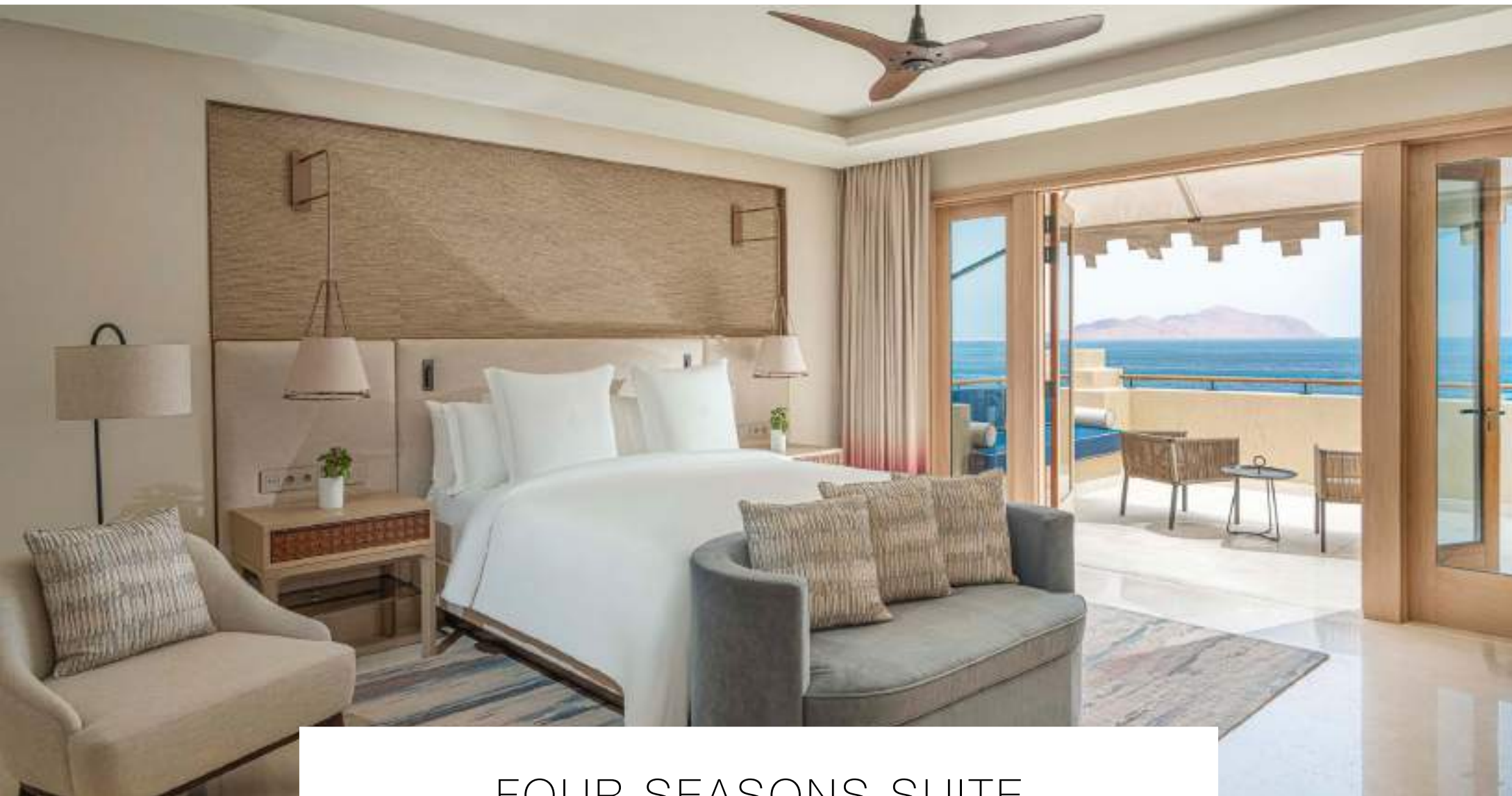
## UNIQUE FEATURES

- Furnished terrace with private heated plunge pool
- Dining table and built-in loveseat
- Extra-large walk-in closet
- Powder room and entry closet, ideal for guests sleeping on the living-room sofabed
- Desk in living room

## FLOOR PLAN







## FOUR SEASONS SUITE

Stay right on the Red Sea beachfront in this elevated one-bedroom suite, offering the latest in design and technology. A larger living and dining area creates an exclusive hideaway, opening to two separate balconies. Your bathroom is a spa-like sanctuary with a bath tub.





# DETAILS

---

## BEDS

One king bed, One sofa bed, plus one rollaway or crib upon request

---

## OCCUPANCY

3 adults, or 2 adults and 2 children ages 12 and under

---

## SIZE

- 156 m2 (1,679 sq.ft.)
- Upper level and lower level

---

## BATHROOM

- One sunlit marble bathroom, including two vanity sinks, water closet, glass-walled shower and bath tub
- One guest powder room with shower

---

## VIEWS

Red Sea

---

## UNIQUE FEATURES

- Two balconies, one with lounge chairs
- Dining table
- Two walk-in closets for him and her
- Coat closet at entrance